



**THE ANNUAL FORUM & EXPO
ON ELECTRONIC IDENTITY IN
AFRICA**



HOW TO SUCCESSFULLY IMPLIMENT ID CARDS AND NATIONAL REGISTRATION: THE LESOTHO PERSPECTIVE

MR. TUMELO RABOLETSI
DIRECTOR - NATIONAL IDENTITY AND CIVIL
REGISTRY, MINISTRY OF HOME AFFAIRS, LESOTHO

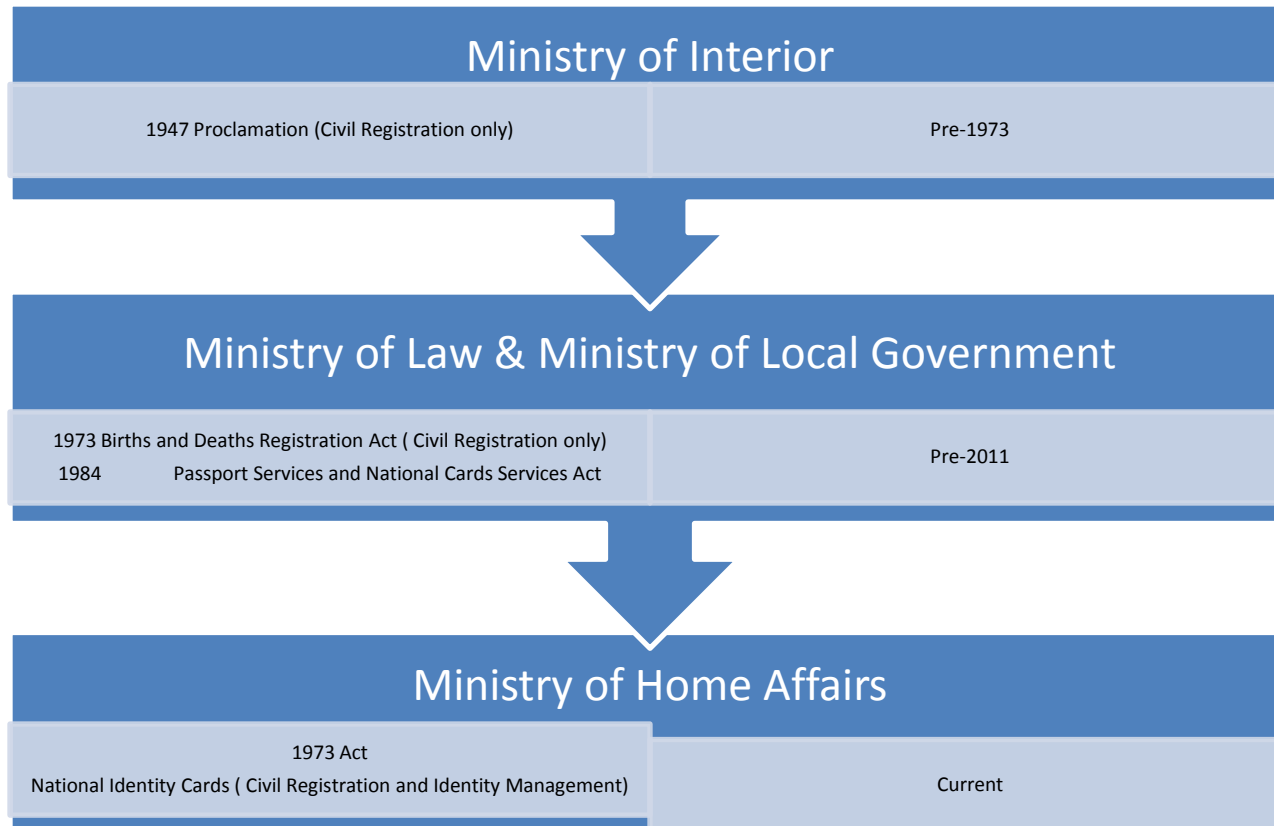
OUTLINE

- INTRODUCTION
- HISTORY OF CIVIL REGISTRATION AND IDENTITY MANAGEMENT IN LESOTHO
- NEW PARADIME SHIFT IN CIVIL REGISTRATION AND IDENTITY MANAGEMENT
- IMPLIMENTATION STRATEGY
- SUCCESSES AND CHALLENGES

- SIZE : ABOUT 11,000 SQ. Miles OR 31, 000 SQ.KM
- POPULATION OF 1.8 MILLION
- RURAL POPULATION : 77% URBAN POPULATION : 23%
- 10 ADMINISTRATIVE DISTRICTS & 4 ECOLOGICAL ZONES (**LOWLANDS, FOOTHILLS, MOUNTAINS & SENQU RIVER VALLEY**)
- SOUTH AFRICA LANDLOCKED
- ECONOMY BASED ON, INTER ALIA,: AGRICULTURE, MINING, LIVESTOCK ETC
- EXPORTS : WATER, TEXTILE & APPAREL, DIAMONDS ETC



HISTORY OF CR & ID MANAGEMENT



HISTORY OF CR & ID MANAGEMENT

CR

- 1947 Proclamation
- 1973 Births and Deaths Registration Act
- 2011 REVIEW OF Births and Deaths registration Act

ID

- Passport Services and **National Cards Services Act, 1984**
- National ID Cards Act, 2011
- Data Protection Act, 2011
- **PRIOR TO 2011**
- Lesotho Passport and travel Document Act 1998
- Amendment 2010
- National Assembly Act
- Driver Licences

STATE OF CR PRIOR TO 2011

CR:-

- PAPER BASED (*compulsory*)AND UNCOORDINATED
 - DIFFERENT INSTITUTIONS INVOLVED
 - INADEQUATE INFRASTRUCTURE
- All 10 Districts and other Institutions such as Churches, Courts had own Registers
 - Ministry of Law, Local Government, Home Affairs
 - Absence of central record management system/archives

PARADIGM SHIFT

Number of developments took place within the country, regionally and globally that led to the new paradigm shift with respect to civil registration and identity management in Lesotho

- UK VISA REQUIREMENT
- 9/11
- SADC Protocol on Free Movement of people
- BILATERAL AGREEMENT BETWEEN LESOTHO AND SOUTH AFRICA ON FACILITATION OF FREE MOVEMENT OF PEOPLE
- FIFA WORLD CUP 2010

Strategy for the new Era



Strategy for the new Era

WHERE ARE WE

- PAPER BASED (*not compulsory*) AND UNCOORDINATED
- DIFFERENT INSTITUTIONS INVOLVED
- INADEQUATE INFRASTRUCTURE
-

WHAT NEEDS TO CHANGE?

HOW DO WE GET THERE?

- **SECURE POLITICAL WILL AND ENSURE AVAILABILITY OF FUNDS**
- ENACTMENT OF NEW LAW GOVERNING ID MANAGEMENT AND REVIEW OF RELEVANT LAWS
- ESTABLISHMENT OF ONE BODY WITHIN ONE MINISTRY TO OVERSEE ALL CR & ID MANAGEMENT

OUR STRATEGY CONT..

WHERE ARE WE

- ABSENCE OF SPECIFIC ID MANAGEMENT AND DATA PROTECTION LAW & OTHER RELEVANT LAWS

WHAT NEEDS TO CHANGE?

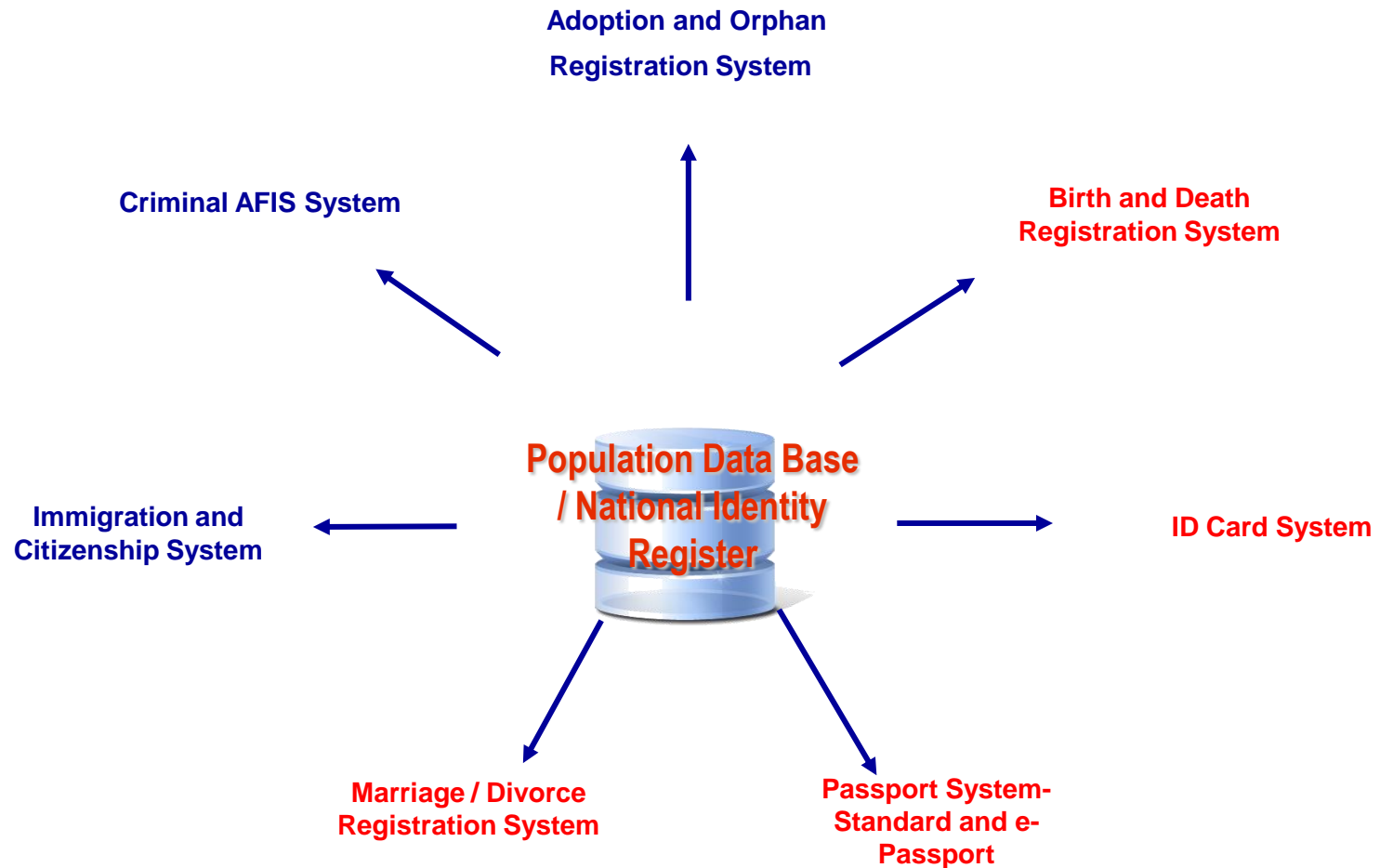
HOW DO WE GET THERE?

- MOVE FROM PAPER TO IT (AUTOMATED) SYSTEM
- ENGAGE MINISTRY OF SCIENCE AND TECHNOLOGY AND ENSURE **REQUIRED IT INFRASTRUCTURE IS AVAILABLE**
- UPGRADING AND /OR ACQUISITION OF NEW OFFICES AROUND THE COUNTRY; HR RELATED ISSUES AND CHANGE MANAGEMENT
- LEARNING FROM OTHER COUNTRIES

WHERE ARE WE GOING?

- ESTABLISHMENT AND MAINTENANCE OF NATIONAL POPULATION AND IDENTITY REGISTER.
- ASSIGN A UNIQUE IDENTITY NUMBER FOR ALL CITIZENS OF LESOTHO AND NON CITIZENS HOLDING INDEFINITE PERMITS
- ISSUANCE OF ID CARDS TO ALL ELIGIBLE POPULATION
- HAVE PROPER AND CREDIBLE POPULATION REGISTER CAPABLE OF DELIVERING A COMPLETE LIFE CYCLE OF VITAL EVENTS

THE SYSTEM IS CAPABLE TO PERFORM THE FOLLOWING:-



CURRENT SYSTEM

12 345678 / 2012

ID Number

01- 12345678- 17

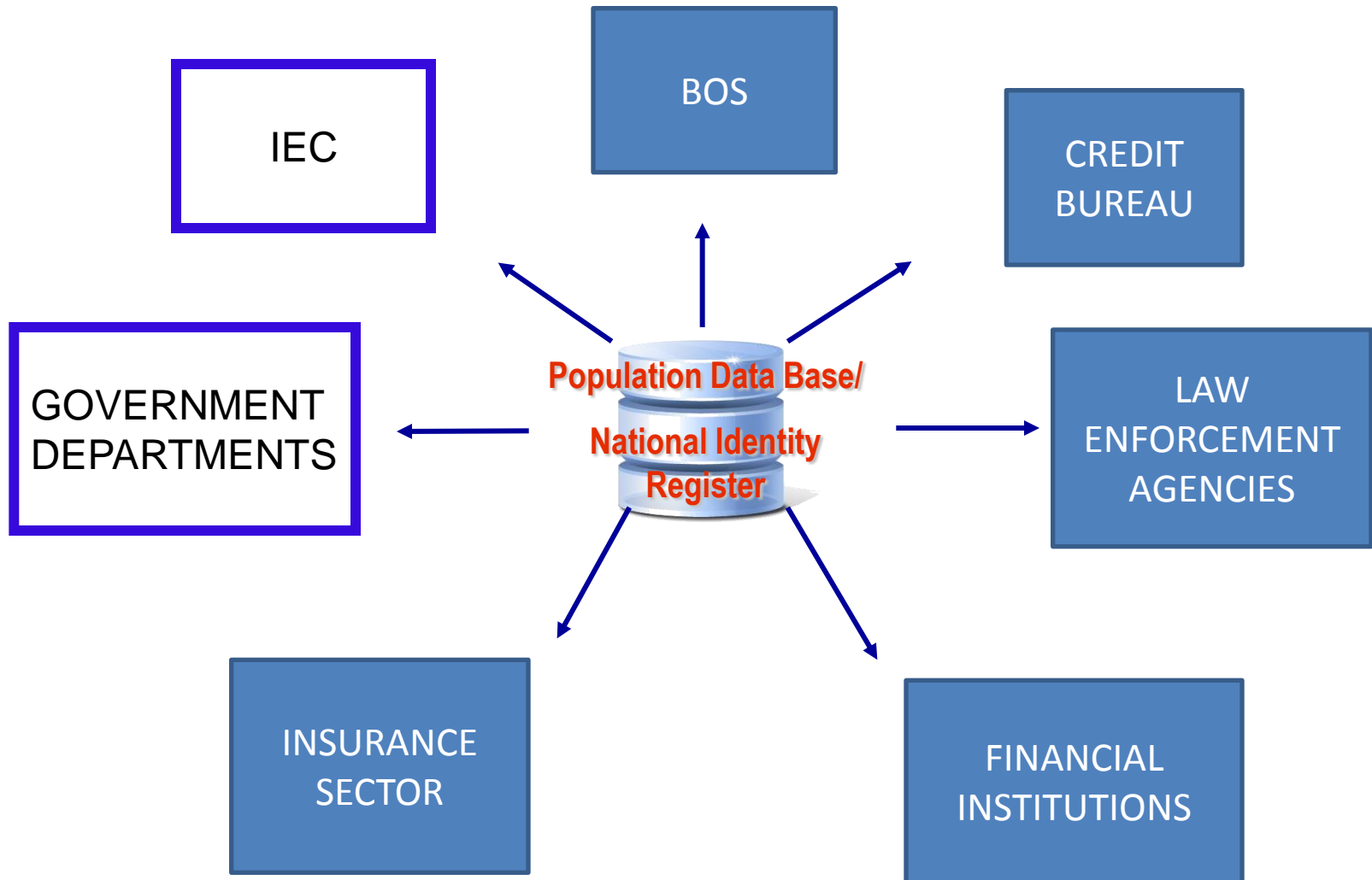
**Civil
Registration
System**

**ID Card
System**

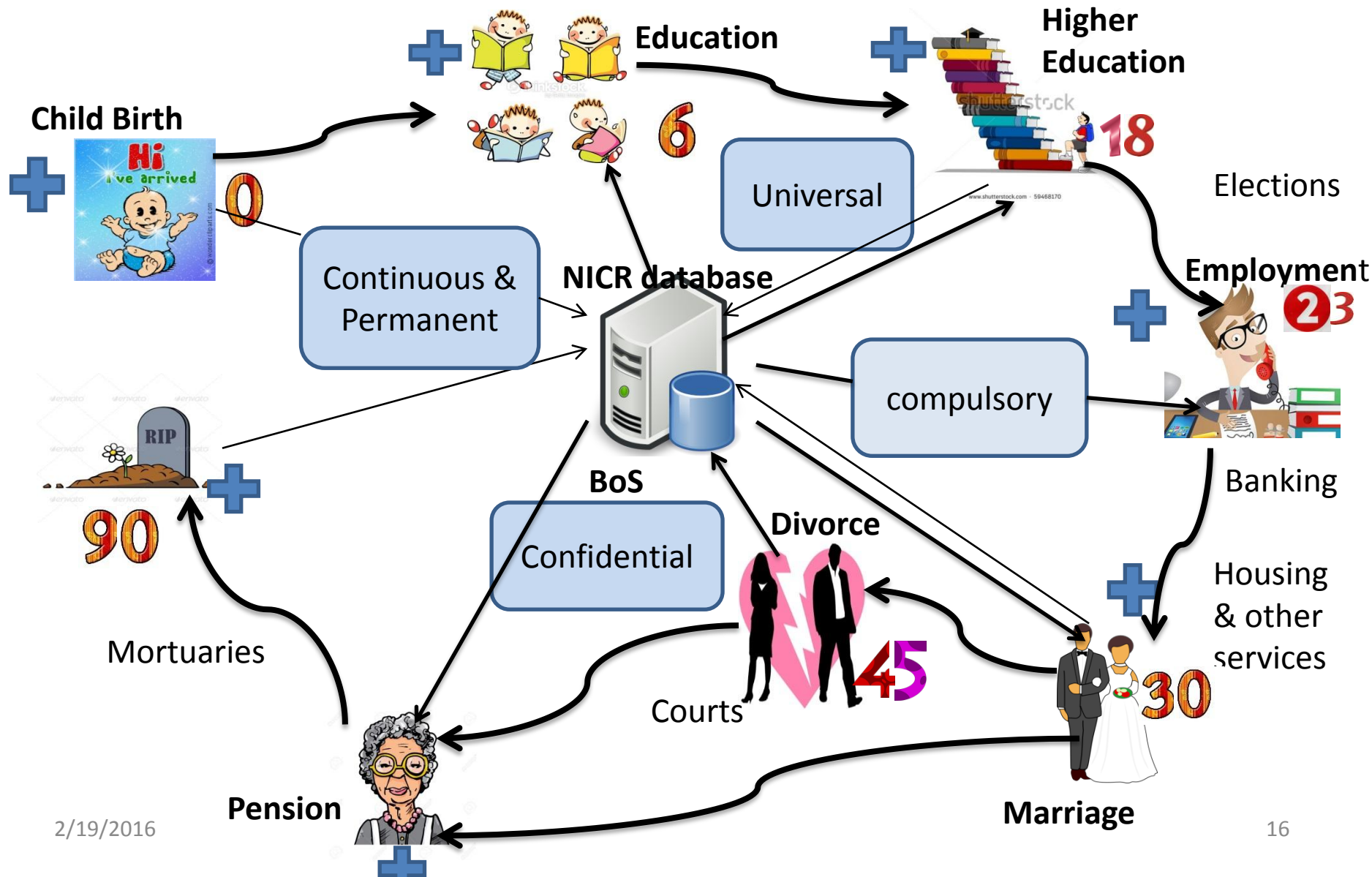
**ePassport
System**

**eBorder
Control
System**

NICR KEY STAKEHOLDERS



LIFE-CYCLE OF VITAL EVENTS



ACHIEVEMENTS

- Over 44% our population have been registered and now in the Population Register;
- Over 25% of the eligible population issued IDs;
- Sensitization of stakeholders:
- Registration of new born children at main hospitals (Government and non Government);
- Established sub Offices in district (pilot phase).

CHALLENGES

- Inadequate Office Space;
- Shortage of registration and office Equipment;
- Shortage of Office Stationary
- Offices are operating under very harsh and unbearable conditions;
- Inadequate filing cabinets to prevent loss of application forms;
- Lack of resources e.g Vehicles;

WAY FORWARD

- Acquisition of appropriate Office Space
- Procurement of requisite resources
- Implementation of robust Onsite registration country wide;
- Full operations of Sub Offices, including clinics

- THANK YOU!

- Q & A