



# Update on the Implementation of Digital Identity in Nigeria

by Engr. Abisoye Coker-Odusote  
Director General / CEO, NIMC

at ID4AFRICA ID DAY 1 SESSION

May 2024

## ▸ NIMC'S Mandate

The NIMC is charged with the establishment and management of a National Identity Management System that is unique, secure, and widely accepted.

## ➤ NIMC'S Focus

To fulfill its mandate effectively, the National Identity Management Commission (NIMC) has focused on two pivotal strategies:

### Seamless and Inclusive Enrollment

The National Identity Management Commission (NIMC) continues to be committed to registering all Nigerians with ease. We have achieved this by deploying mobile units to remote areas, offering online platforms accessible from different devices, and providing support for multiple languages and disabilities.

These efforts aim to make enrollment inclusive and accessible for everyone.

### Reliable Identity Verification Platforms

The commission remains committed to creating reliable identity verification systems that partners can rely on. This involves implementing scalable technologies with advanced biometric data, ensuring compatibility with government and private databases, and constantly improving these systems for maximum security and efficiency.

Implementing these strategies has helped boost accessibility to government and private services, enhance service delivery efficiency, and bolster national security. Through seamless population enrollment and reliable identity verification platforms, NIMC will continue to greatly contribute to national development and facilitate better service delivery nationwide.

# ➤ NIN - Essence And Benefits

To ensure every Nigerian understands the necessity and benefits of obtaining a National Identification Number (NIN), we've devised a multifaceted strategy aimed at making digital identity essential and streamlining the enrollment process.

## Our Strategy



We aim to integrate the National Identification Number (NIN) into essential public and private sector services, making it mandatory for accessing government services like healthcare, voting, taxes, and social benefits, as well as for private sector transactions such as banking and mobile phone registrations, ensuring its widespread use among all Nigerians.

## Our Approach



Our approach to simplifying registration includes expanding nationwide and international registration centers, deploying mobile units to remote areas through partnerships, and introducing an online self-service option for remote data submission. These initiatives enhance convenience and efficiency for all applicants, ensuring easier and more accessible registration for everyone.

# ➤ NIMC's 5 Point Agenda

## 1. Increase Enrollments

- Increase the NIDB capacity
- Create more special centers
- Introduction of self-service for front-end services.

## 2. Harmonization and Integration of Data Across all Agencies

- Continuous inter-agency collaborations to enhance integration and harmonization with all MDA's.

## 3. Issuance And Activation of GMPC/Use Of Applets

- Relaunch of GMPC issuance and inclusion of applets on the card

## 4. Access To Services To Aid Financial Inclusion Through G2P Payments

- Activation of payments and other solutions on the GMPC
- Continued collaboration with State Government for integration with residents registration effort
- Availability of seamless verification services to all financial institutions

## 5. Increase Public And Private Sector Participation In Using The NIN As The Foundational Data For Identification

- Continued increase in awareness for the efficacy of the NIN
- Continued enforcement of the mandatory use of NIN and aggressive monitoring and evaluation of the compliance to NIN use.

# ➤ NIMC's Journey in Last 9 Months

## Assumption of NIMC DG

Engr. Abisoye Coker-Odusote

Aug 23, 2023

NIN and TIN integration with Federal Inland Revenue Service

October 2023

NYSC concludes system integration with NIMC for KYC verification , As at date **1,130,835** calls have been made on the verification platform

January 2024

Bill for the **NIMC 2024 amendment ACT** passes second reading in the National House of Representatives

March 2024

Collaboration with **NASSCO** Flag-off of Palliatives pre-disbursement training/pilot ongoing

April 2024

Over **107 million NINs** issued

May 2024

Sep 16, 2023

**NIMC celebrates the world Identity Day**

Launch of the NIMC contactless mobile biometric solution for Self-service operations as part of the activities to commemorate the world identity day

**NPC & NIMC** set up a joint implementation committee for a data harmonization & successful 2024 census  
January 2024

February 2024

NIMC collaboration with **SMEDAN** for the provision of KYC to facilitate the provision of grants and **NANO loans to micro, small & medium enterprises** currently at test integration phase

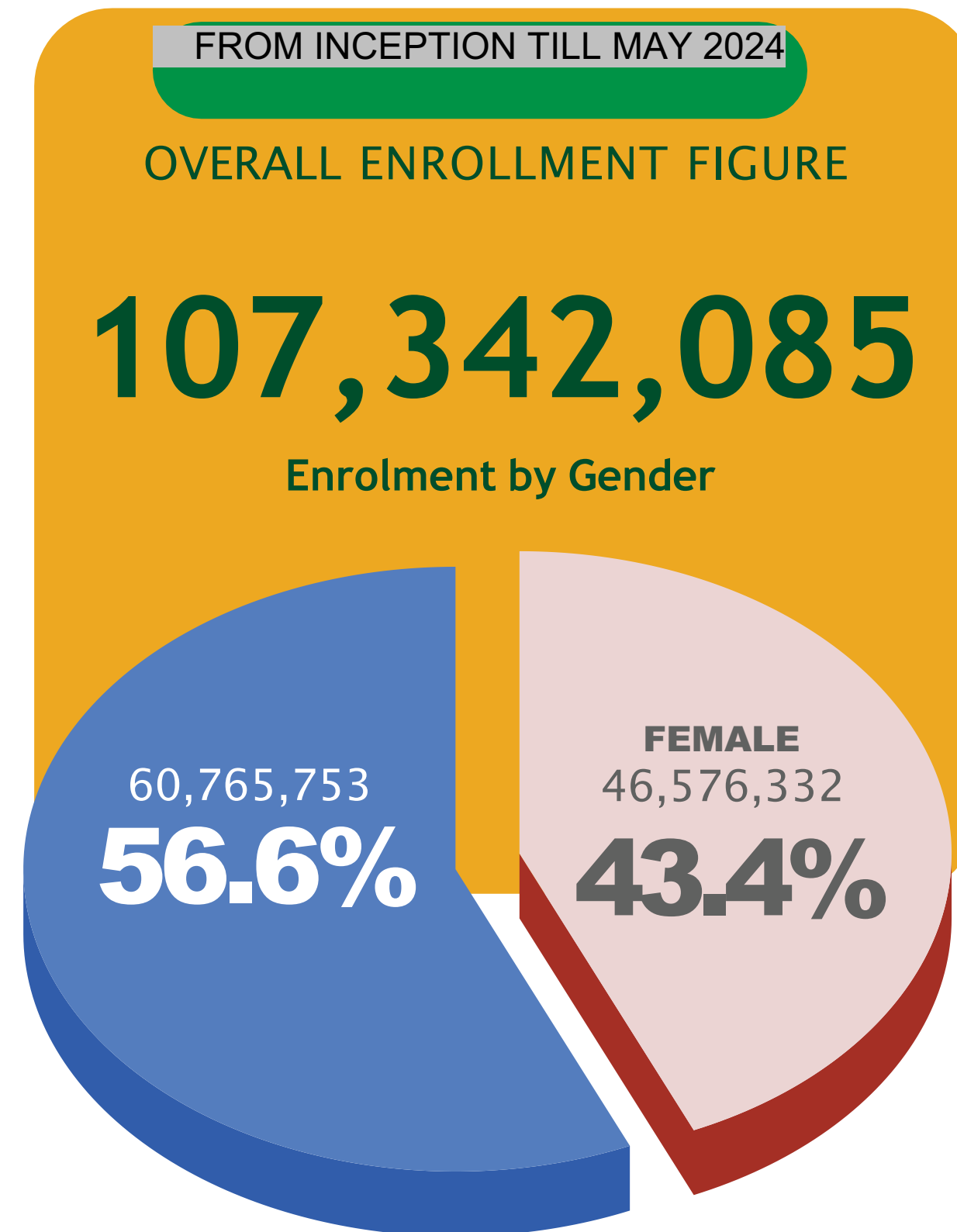
March 2024

Launch of the NIMC **Self- Service Web Based Portal**

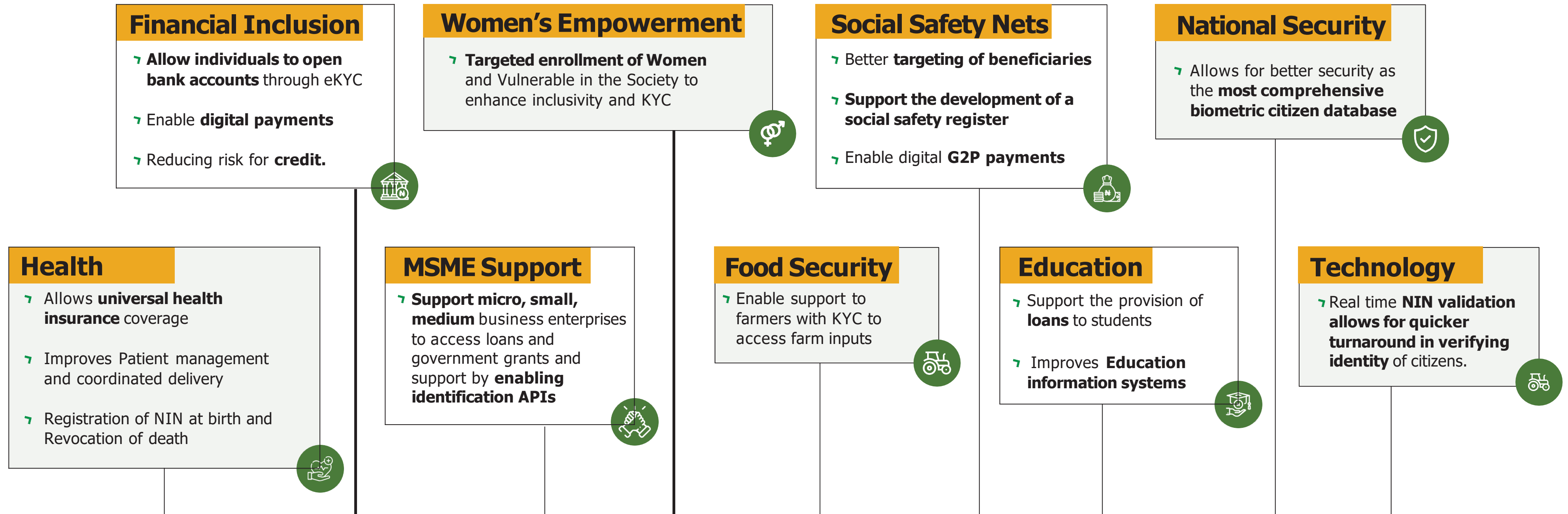
This will enable Nigerians both locally and abroad to make necessary modifications such as changing of names, date of birth and phone number from the comfort of their homes using various IOS and android-based devices

TODAY

# Enrolment Records



# ➤ Strategic Direction - Access To Government Services



Providing Innovative citizen centric products and services in an integrated identity system that will strengthen the Government's fiscal management, promote good governance and transparency through inclusivity and social equality, ensuring that marginalized and vulnerable populations are not excluded from government services.



# Some Partner Agencies



Collaborating with the National Social Safety Net Coordinating office to build a reliable National Social Safety register and ensure the coordination, refining and integration of the Social Safety net programs into social protection systems while ensuring transparency



Partnering with the Small & Medium Enterprises office to implement 2 financial empowerment initiatives of Government namely-The Presidential palliative Grant Program & Presidential palliative loan program for Nano Businesses ;MSMEs and Manufacturers with planned targeted beneficiary to be 70% women and youth.



Providing the authentication and verification infrastructure for the Students loan office for the profiling of students to determine their eligibility for student loans to be used for the payment of school fees and other essentials , to provide education which positively influences the progress of people and the society



Nigeria Inter-Bank Settlement System Plc

Engaging with the Central Bank of Nigeria-Financial services arm to produce National payment card layered on identity . The card has the potential to be a game changer in boasting financial inclusion ,social interventions , travels amongst others , the card is powered by Afrigo a domestic card service provider.



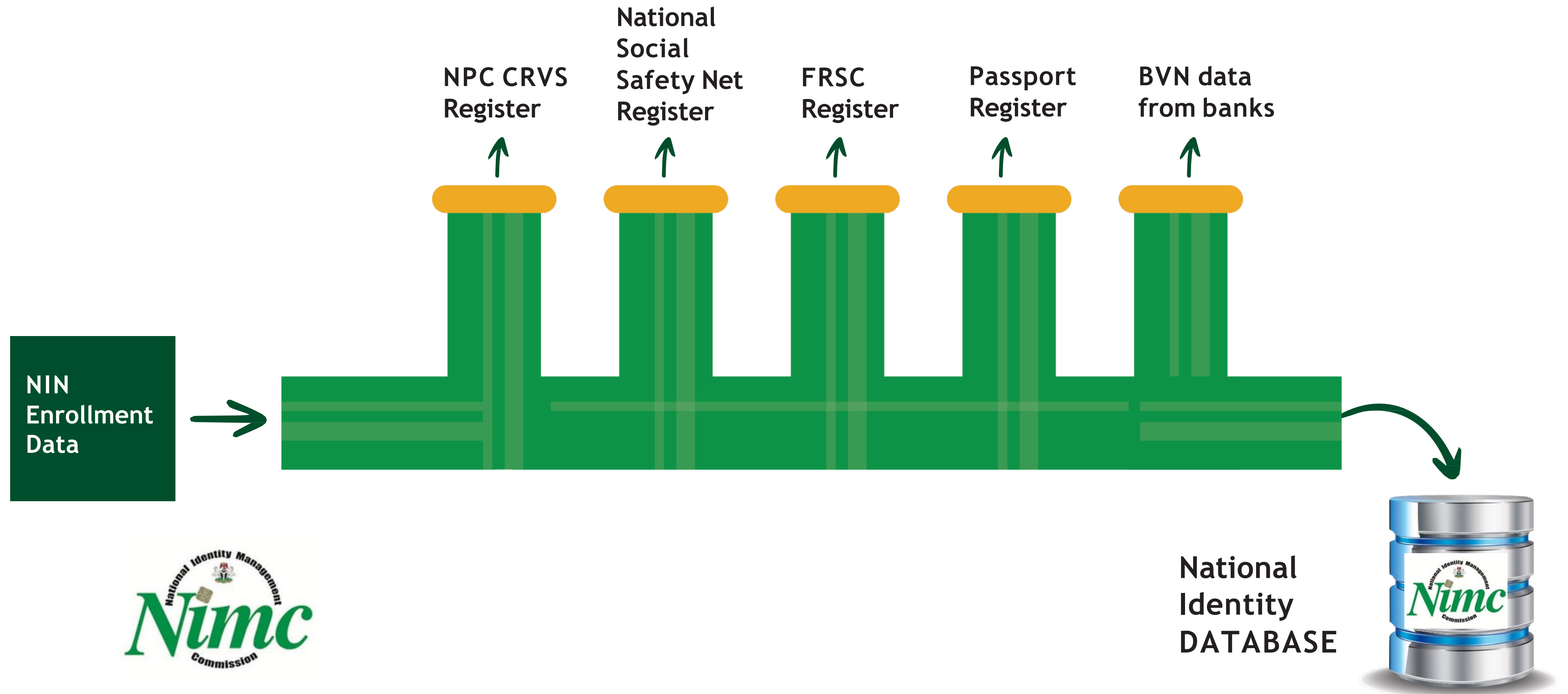
Collaborating with the National Population Commission to ensure a seamless harmonization and integration of all foundational identity data including the Civic Registrations and Vital Statistics with the National Identity Management System



Working with the tax office to provide KYC verification services for taxation, improve tax collection and remittances as well as harmonize the identity of all tax collectors within the country.

NIMC will continue embarking on aggressive Integration & harmonization with other agencies of Government to enhance service delivery in key sectors of the economy and to better serve the interest of the Country.

# Centralized Identity Reference



# ➤ New Developments



Visit: <http://selfservicemodification.nimc.gov.ng/>

[www.nimc.gov.ng](http://www.nimc.gov.ng) [NIMC](#) [nimc.ng](#) [nimc\\_ng](#) [nimc.ng](#) [nimc.ng](#) [nimc.ng](#)

**NIMC SELF-SERVICE WEB PORTAL**

**Convenience**

**Accessibility**

**Efficiency**

**Empowerment**

**Accuracy**

**Cost-effectiveness**

**Security**

**User-friendly  
interface**



**CONTACTLESS MOBILE  
ENROLLMENT DEVICE**

# ➤ NIMC In The Next 12 Months

Upgrade the ABIS capacity to 250m

NIMS 2.0 redesign

DPI - Creating the foundation  
for the “Nigeria Stack”

Implementation of PKI for Nigeria

Mobile enrollment  
taking enrollment to hard  
to reach rural areas, IDP camps  
and correctional centers

Introduction of General  
MultiPurpose Cards  
use cases include financial  
inclusion, social care, travel, etc.



THANKYOU