

The  
Alan Turing  
Institute

10 mins

---

# Measuring Trustworthiness using DISTAF:

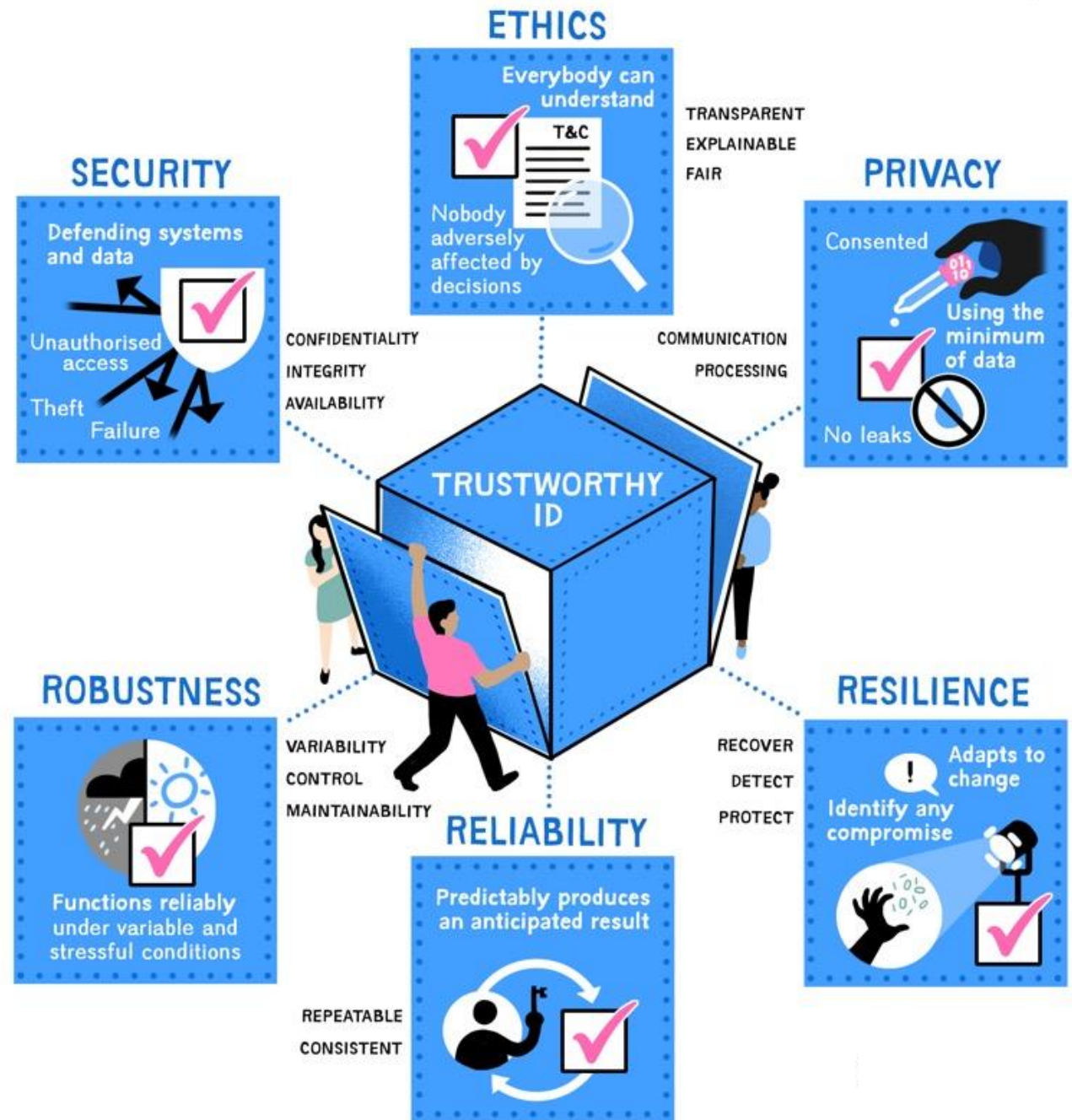
Latest developments and adoptions

Dr. Mirko Bottarelli

[mbottarelli@turing.ac.uk](mailto:mbottarelli@turing.ac.uk)



# Digital Identity System Trustworthiness Assessment Framework



---

# DISTAF Key characteristics

## **Configurable**

- Vertically, only assessing what is in your scope
- Horizontally, assessing at the right level of detail

## **Auditable**

- Full standalone and comparison reports

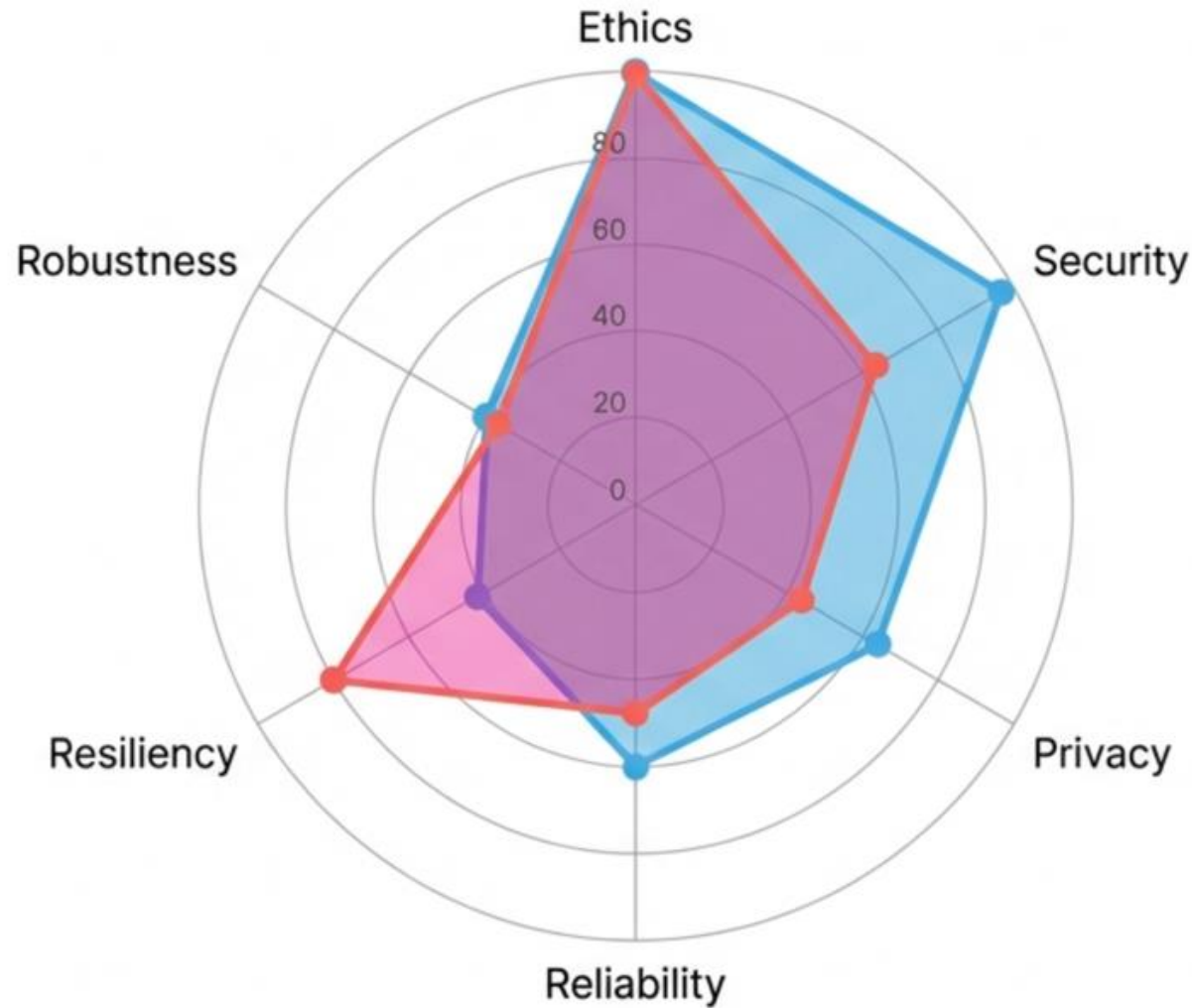
## **Self-improving tool**

- Designed to be useful from early stages to deployment and maintenance

# The Trustworthiness Fingerprint

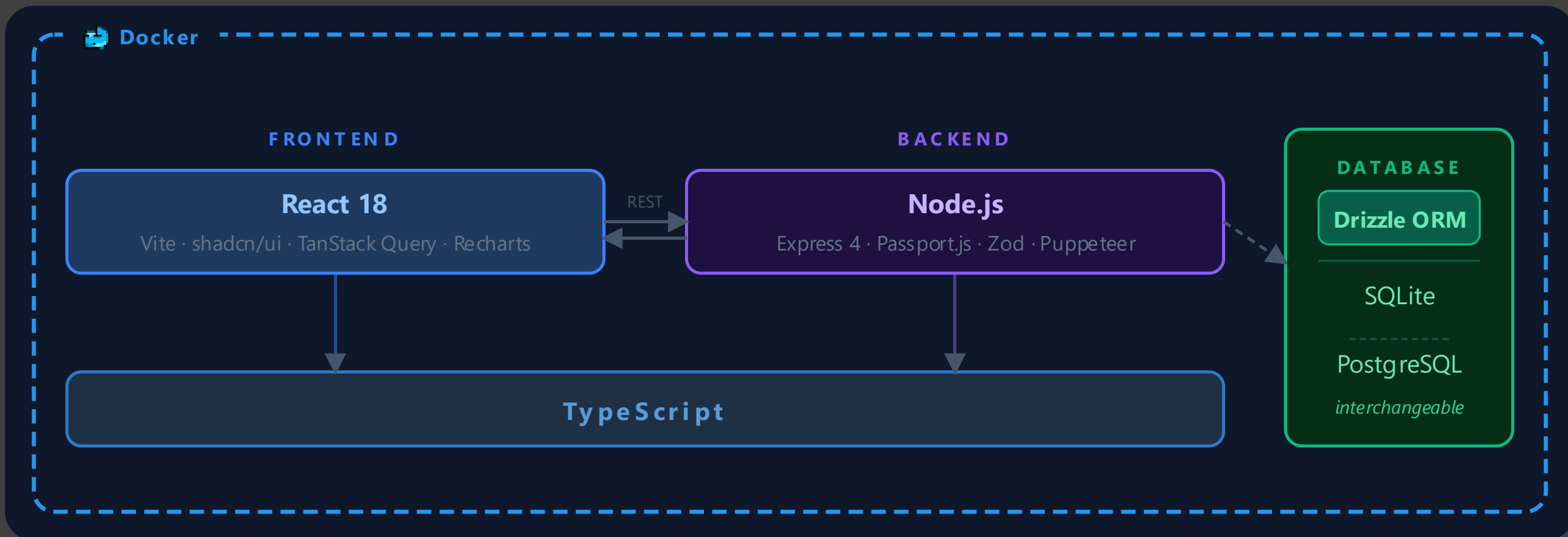
- The **Fingerprint** allows stakeholders to instantly visualize the shape of trust and identify gaps between intent and reality.
- Regular assessments enable long-term understanding and goal setting

Blue = Design Score  
Red = Operational Score



# DISTAF Latest Developments [1/2]

Rewritten to a fully-**Opensource Stack** focusing on **Ease of deployment**



# DISTAF Latest Developments [2/2]

The image displays the Trustworthiness Framework Tool interface. The top navigation bar includes the tool name, a 'Dashboard' tab, 'User Management', and user roles 'Admin' and 'SA System Administrator'. The main content area is split into two parts: a background dashboard and a foreground 'Standards Compliance' modal.

**Trustworthiness Framework Tool** | Dashboard | User Management | Admin | SA System Administrator

**Welcome back, System**  
Manage your ID system assessments and track trustworthiness scores across...

Exclude from assessment

**Collection and Data minimisation**  
Collection and Data minimisation controls and measures

**Quick Configuration Presets**  
Operational Metrics Configuration: None (Manual) | Design Metrics Configuration: None (Manual)

Metric 1 of 7

**P.CDM.D1 Data is adequate and relevant (the purpose and rational are clear)** P.CDM.D1  
Data relevance indicates the level of consistency between the content of data and the purpose of the EIDS.  
Design Metric

**Assessment Value**  
 Yes / Implemented  No / Not Implemented

**Notes & Justification (Optional)**  
Add notes or justification for your answers to this metric...

**Standards Compliance**  
TEST1

**Overall Compliance Progress** 26 of 39 Standards  
67%

Checking a standard will automatically set all related metrics to "Yes" (100% score)

**Available Standards**  
Select the standards your system complies with. This will automatically mark all associated metrics as implemented.

- ISO/IEC 24760 - Identity Management Framework Not Compliant
- ISO/IEC 27001 - Information Security Management Systems Compliant
- ISO/IEC 27005 - Information Security Risk Management Compliant
- ISO/IEC 27550 - Privacy Engineering Compliant

---

# DISTAF Adoption

## National ID Ethiopia (NIDP) and the Aadhaar team

- Used DISTAF for self-assessment through an Alan Turing Institute supported engagement.

## Benin

- Exploratory discussions have also been conducted on using DISTAF across different stages.

## Sri Lanka

- Planning to include DISTAF as a requirement for their System Integrators, so that improvements can be identified at each stage of the ID system.

## MOSIP

- Close engagement in the final stage, with a deep-dive review focused on the design phase. Initial results are promising, and learnings are currently being documented.

## EY, Deloitte and others

- Early-stage engagements with consulting firms are in progress to help accelerate adoption and awareness through additional channels.

---

Thank You  
Questions & Discussion